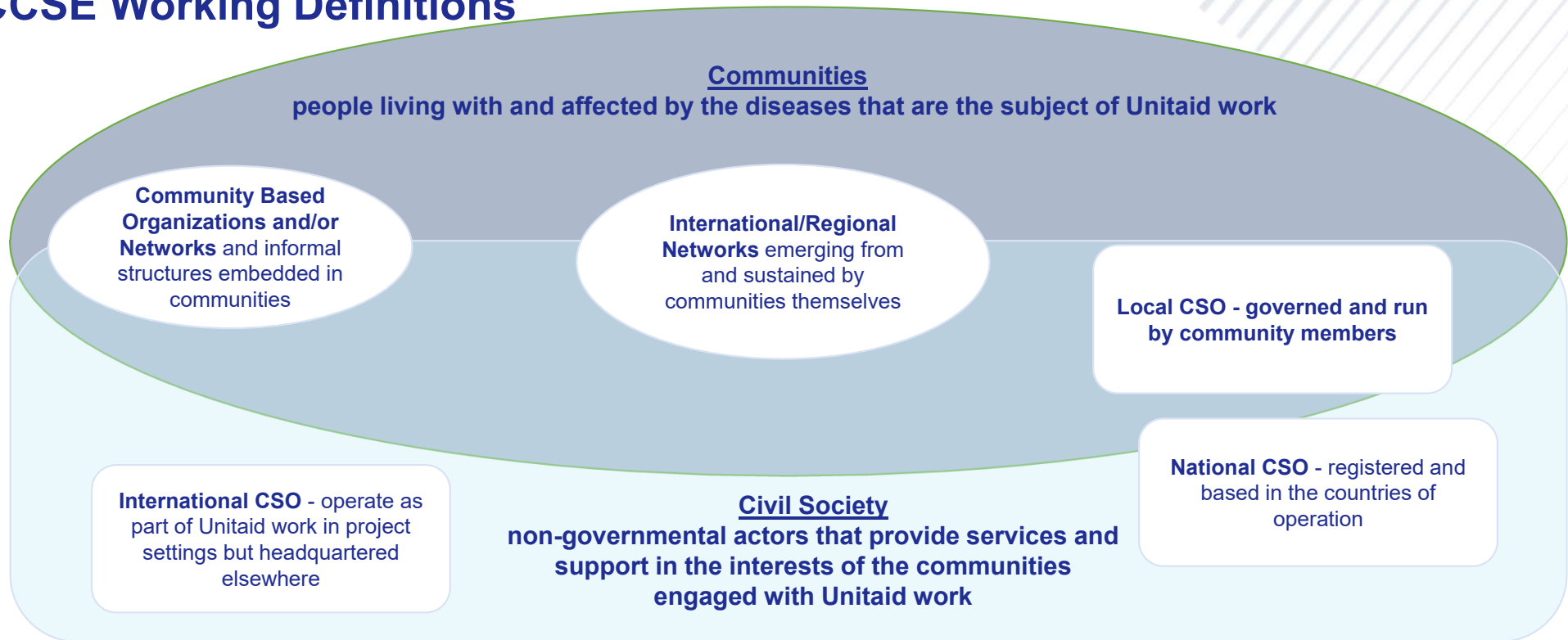




## CCSE Working Definitions



**Engagement refers to Unitaid or Unitaid grantees taking actions with the express purpose of increasing community and civil society participation or agency within the work of Unitaid**

*Note: The definitions above are intended to provide a general classification of typical entities with who Unitaid expects to work. They are not intended to provide a complete description of all actors and stakeholders in the sphere of Communities and Civil Society.*